



# PRE-HOSPITAL PROVIDER RECOGNITION AND TREATMENT OF SEPSIS

OHA Statewide Sepsis Initiative

March 16, 2016

# OHA QUALITY PROGRAMS TEAM

Collaborating for a Healthy Ohio



**Amy Andres**  
Senior Vice President of  
Quality and Data



**James Guliano**  
Vice President of Quality  
Programs



*Rosalie  
Weakland*



*Ellen  
Hughes*



*Ryan  
Everett*



*Carol  
Jacobson*



*Andrew  
Detty*



*Rhonda  
Major-Mack*



# 3<sup>RD</sup> CONSENSUS DEFINITIONS

## Surviving Sepsis Campaign Response



### **Surviving Sepsis Campaign Responds to Sepsis-3**

March 1, 2016

In response to the European Society of Intensive Care Medicine's and the Society of Critical Care Medicine's Third International Consensus Definitions for Sepsis and Septic Shock (Sepsis-3),<sup>1-3</sup> the Surviving Sepsis Campaign (SSC) offers clarification on the implications of the new definition statements and guidance for hospitals and practitioners. Many organizations, including regulatory agencies and hospitals, are focused on sepsis quality improvement programs. The following advice is meant to put the recent publication of the consensus definitions in context to facilitate the continued successes of sepsis screening, early identification and treatment that have been the hallmark of SSC's quality improvement efforts associated with improved survival during the preceding decade.<sup>4,5</sup>

Full response available at:

<http://www.survivingsepsis.org/SiteCollectionDocuments/SSC-Statements-Sepsis-Definitions-3-2016.pdf>

OR

<http://ohiohospitals.org/OHA/media/Images/Patient%20Safety%20and%20Quality/Documents/Sepsis/SSC-Statements-Sepsis-Definitions-3-2016.pdf>

# NORTHEAST OHIO REGIONAL QUALITY COLLABORATIVE

## Co-Chair:

David E. Custodio, MD, MBA, FACEP  
Vice President, Hospital Chief  
Medical Officer

Summa Health System  
525 East Market  
Akron, OH 44309-2090

[CustodiD@summahealth.org](mailto:CustodiD@summahealth.org)

## Co-Chair:

Carol A. Murphy, MSN, RN  
Director of Quality Improvement

Union Hospital  
659 Boulevard  
Dover, Ohio 44622

[CarolM@unionhospital.org](mailto:CarolM@unionhospital.org)



# NORTHEAST OHIO REGIONAL QUALITY COLLABORATIVE

AKRON CHILDREN'S HOSPITAL  
AULTMAN HOSPITAL  
CLEVELAND CLINIC MAIN CAMPUS  
LAKE HEALTH TRIPOINT MEDICAL CENTER  
LAKE HEALTH WEST MEDICAL CENTER  
MERCY MEDICAL CENTER  
SALEM REGIONAL MEDICAL CENTER  
SOUTHWEST GENERAL HEALTH CENTER  
SUMMA AKRON CITY HOSPITAL  
SUMMA BARBERTON HOSPITAL  
SUMMA ST. THOMAS HOSPITAL  
SUMMA WESTERN RESERVE HOSPITAL  
UNION HOSPITAL  
UNIVERSITY HOSPITALS CASE MEDICAL CENTER  
UNIVERSITY HOSPITALS PORTAGE MEDICAL CENTER  
UNIVERSITY HOSPITALS SAMARITAN MEDICAL CENTER

# FEATURED PRESENTER



**Rommie L. Duckworth, LP**

*Founder and Director*

New England Center for Rescue & Emergency Medicine LLC

*Fire Captain & Paramedic-EMS Coordinator*

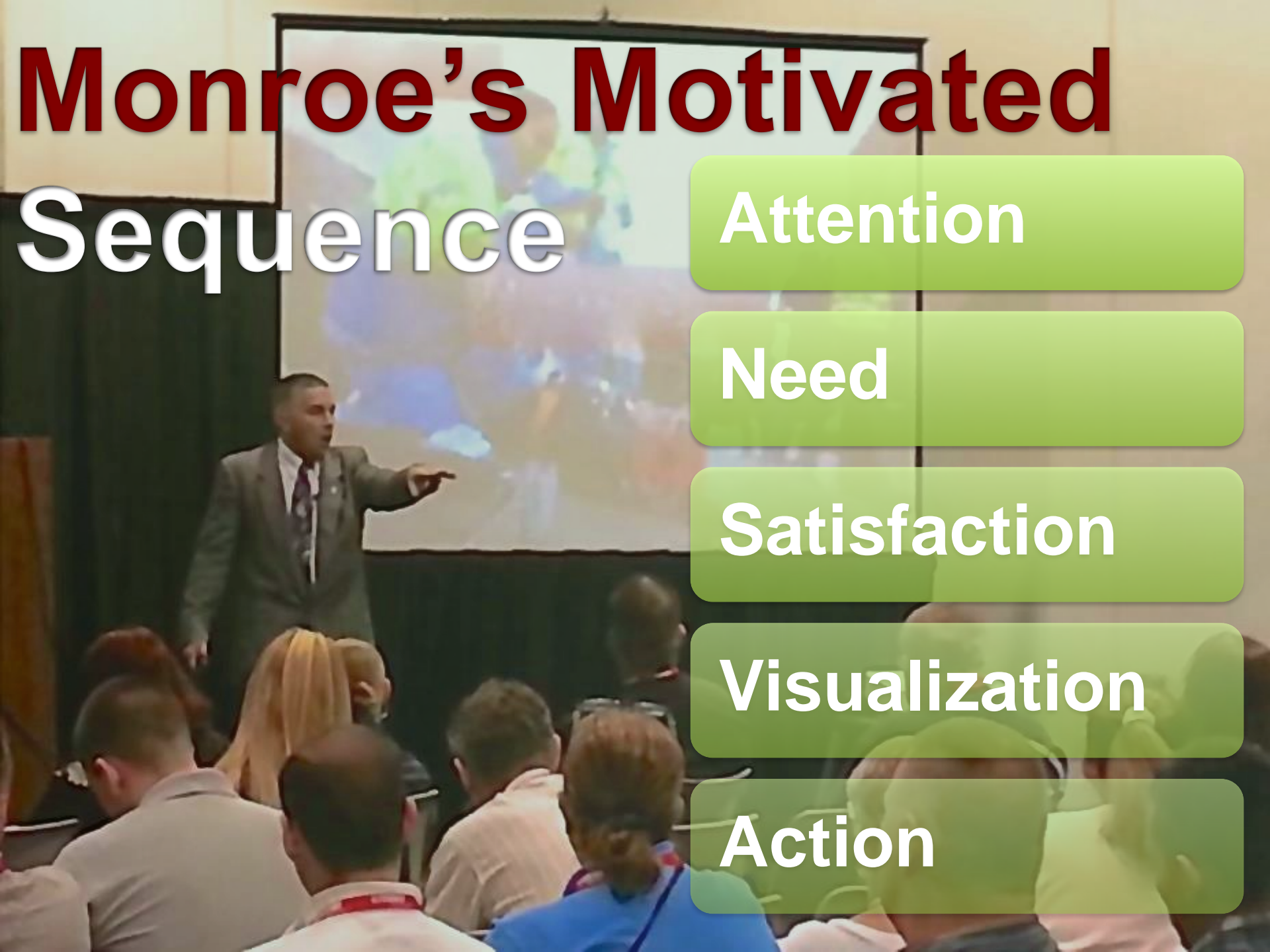
Ridgefield Fire Department

# Educating EMS

A photograph of a line of ambulances on a road, viewed from behind. The ambulances are white with blue and red markings, including the Star of Life. They are parked in a line, and the background shows a road and some trees.

Understanding the Role and  
Motivations of EMS Providers  
In The Care Of Sepsis Patients

# Monroe's Motivated Sequence

A man in a grey suit and purple tie stands on a stage, pointing his right hand towards a large projection screen. The screen displays a colorful, abstract image with green, blue, and orange hues. In the foreground, the backs of several audience members' heads are visible, showing they are seated and facing the stage. The overall scene is a presentation or lecture.

Attention

Need

Satisfaction

Visualization

Action



# Super Sick Kids



The **A** **B** **C**'s of



Pediatric Septic Shock

Andrew  
Averie



# Andrew

14 Years Old

January 2007

PA State Soccer Championship

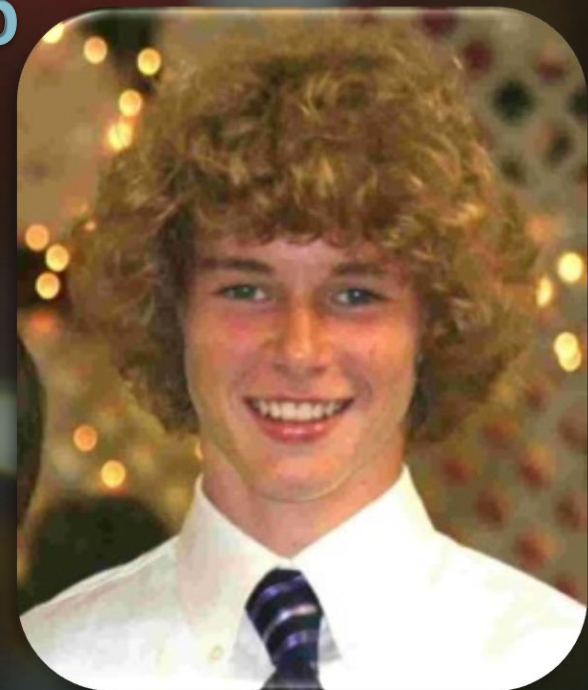
Appendicitis

Leukemia

Septic Shock

Chemotherapy

5½ Months & 50 Procedures



# Averie

3 Years Old

February 2011

Fever at daycare

16 hrs. later

ER Diff Dx of Flu

Tests -, Condition deteriorated over 9 hours

Sepsis

6 Days Later



“If you would have waited until the next morning, I’m almost certain she would have died.”



# Incidence

## Major Medical Killers in the USA

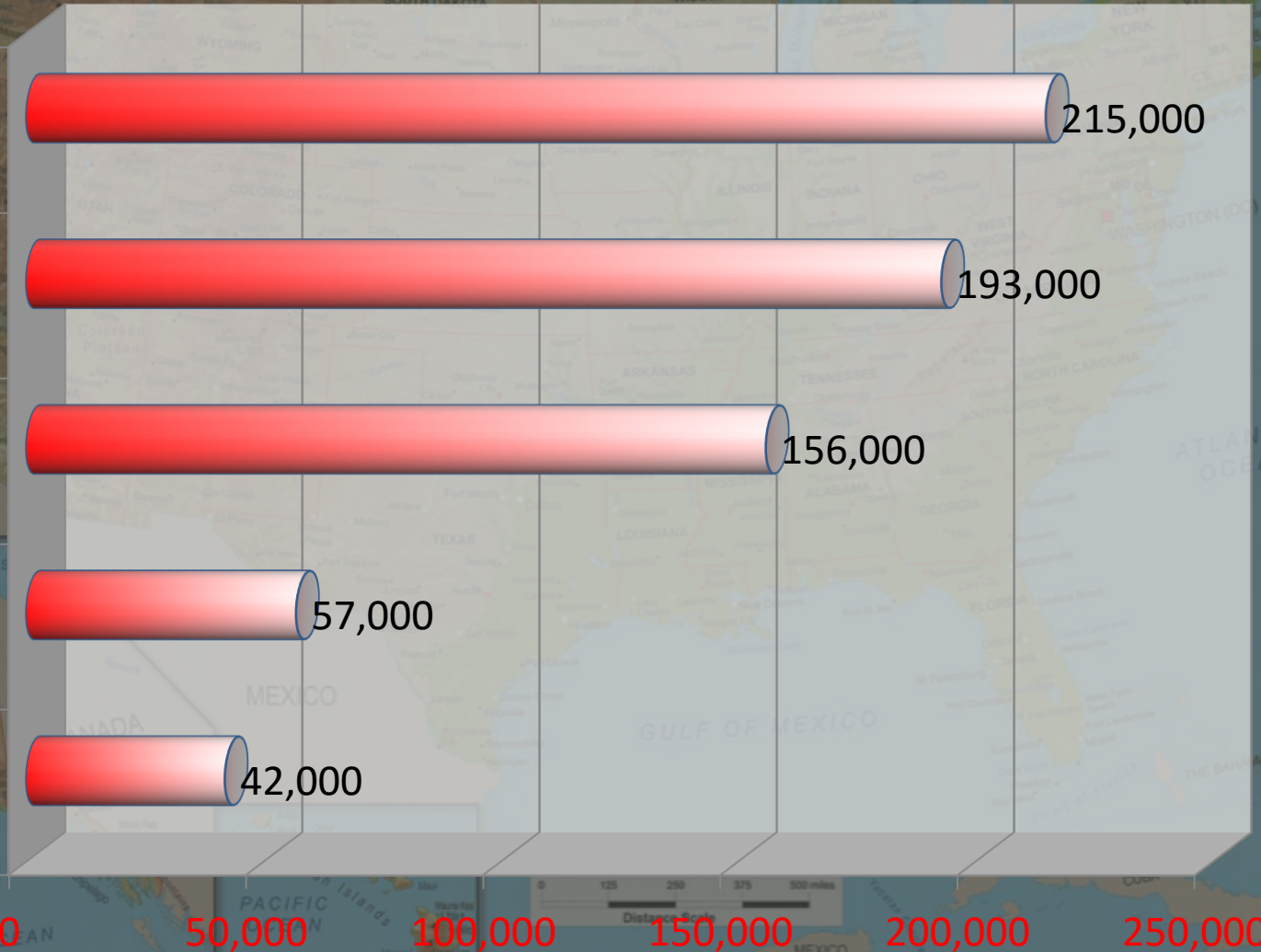
Severe Sepsis

AMI

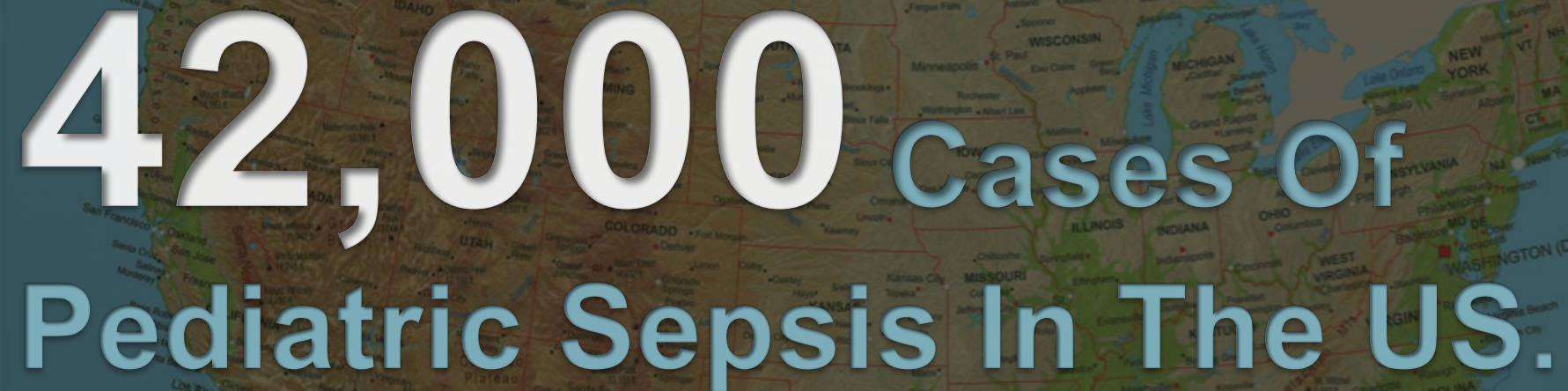
Lung Cancer

Colon Cancer

Breast Cancer



# Incidence

A map of the United States serves as the background for the text. The text is overlaid on the map, with the number '42,000' in large white font and the rest of the text in a blue font with a white outline. The text is centered horizontally and spans across the middle of the image. The map shows various states and cities, with a focus on the central and eastern parts of the country. The text is the primary focus, with the map providing a geographical context.

**42,000** Cases Of  
Pediatric Sepsis In The US.

A map of Alaska and surrounding regions, including parts of the Russian Federation, Canada, and the United States. The text "Annually 4,400 Die." is overlaid in large, white, bold letters. The word "Annually" is in a smaller font size than "4,400", which is the largest. "Die." is in a medium font size. The text is positioned across the middle of the map, with "Annually" on the left, "4,400" in the center, and "Die." on the right. The map shows various geographical features like the Beaufort Sea, Fairbanks, and Anchorage.

Annually 4,400 Die.



# What Can EMS Do?

Learn the Facts

Spread the Word

Get & Use Sepsis Alert

Raise Awareness

Be a Patient Advocate

# EMS

Proper identification of  
Sepsis decreased TTT

**30-60** minutes

*and* improved mortality





# EMS

Detect about

**10%** of cases

of Septic Shock



# EMS

Detect about

50% of cases

of Septic Shock





# SISSEPSIS

# Follow the Patient's

C  
H  
A  
R  
T





# CHART

A hand holding a pen is writing on a clipboard. The clipboard has a medical form with various sections and checkboxes. The form is titled 'CHART' and has sections for 'Complaint', 'History', 'Assessment', 'Red Flags', and 'Treatment'. The background is a blurred image of a person's face.

Complaint

History

Assessment

Red Flags

Treatment

# What Is Sepsis



Acquired Infection



Blood Vessel Problems

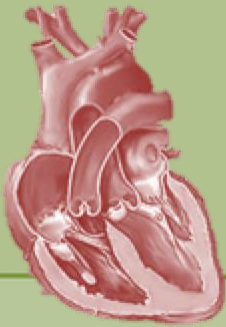


Circulatory Collapse



# The qSOFA

Quick Sequential (sepsis-related) Organ Failure Assessment



Hypotension  
Sys. BP < 100  
mm/hg



Altered Mental  
Status



Tachypnea  
RR > 22 min.

Two or more suggests a risk of poor outcome

H A T

# CHART

A hand holding a pen is writing on a clipboard. The clipboard has a medical form with various sections and checkboxes. The form is titled 'CHART' and has sections for 'Complaint', 'History', 'Assessment', 'Red Flags', and 'Treatment'. The background is a blurred image of a person's face.

Complaint

History

Assessment

Red Flags

Treatment



# Mental Model



Focused Priority

Hx. Prior Care

Current State

Immediate Needs

# Pre-Alerts

Trauma

Cardiac

Stroke

Sepsis





# Standardized Format

**S**ituation

*Priority Concerns!*

**B**ackground

*What Happened?*

**A**ssessment

Top to Toe Exam

Vital Signs

Scales / Scores

**R**ecommendations

What did YOU do?

How did THEY do?

What should WE do?

# Hand Off Report



Do it with EEE



# Sending



*Eye Contact*

*Environment*

*Ensure ABC's*

*Structured Report*

*Supply Documentation*

# Receiving

*Eye Contact*

*Environment*

*Ensure Understanding*

*Summary*

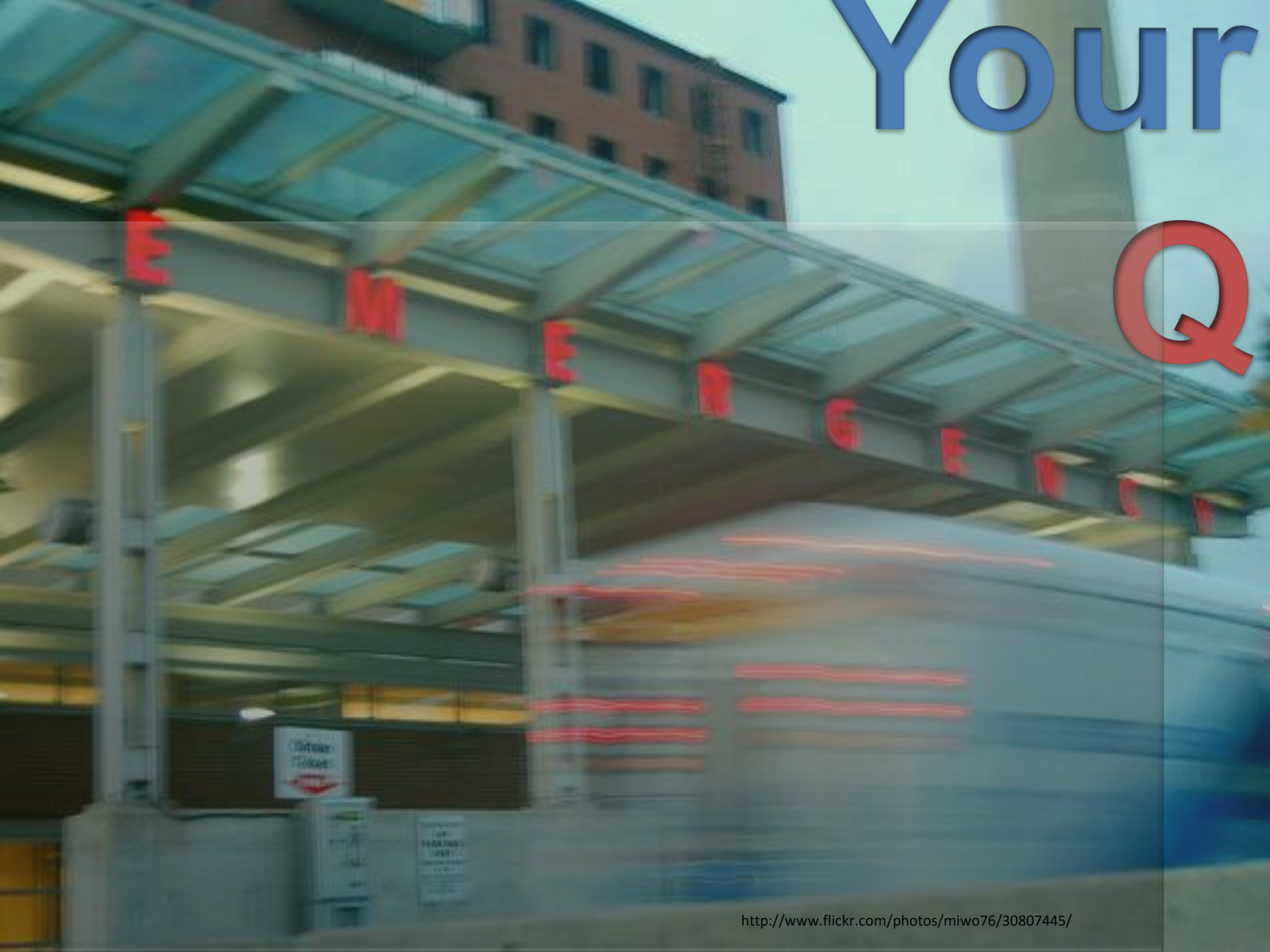
*Supplementary  
Documents*





**Be Heard**  
**Spread the Word**  
*Unrecognized*  
***Sepsis Kills Kids***

# Your Q







**Join Me On Twitter:**

*@romduck*

*@RescueDigest*



**Contact Me:**

*www.RomDuck.com*



**Resources:**

*www.bit.ly/PedSepsisEMS*

*www.RescueDigest.com*

# QUESTIONS?



**Rommie L. Duckworth, LP**

*Founder and Director*

New England Center for Rescue & Emergency Medicine LLC

*Fire Captain & Paramedic-EMS Coordinator*

Ridgefield Fire Department

# OHA QUALITY PROGRAMS TEAM

Collaborating for a Healthy Ohio



**Amy Andres**  
Senior Vice President of  
Quality and Data



**James Guliano**  
Vice President of Quality  
Programs



*Rosalie  
Weakland*



*Ellen  
Hughes*



*Ryan  
Everett*



*Carol  
Jacobson*



*Andrew  
Detty*



*Rhonda  
Major-Mack*



# OHA collaborates with member hospitals and health systems to ensure a healthy Ohio

James V. Guliano, MSN, RN-BC, FACHE  
Vice President, Quality Programs  
[James.Guliano@ohiohospitals.org](mailto:James.Guliano@ohiohospitals.org)

---

**Ohio Hospital Association**  
155 E. Broad St., Suite 301  
Columbus, OH 43215-3640

T 614-221-7614  
[ohiohospitals.org](http://ohiohospitals.org)



HelpingOhioHospitals



@OhioHospitals



[www.youtube.com/user/OHA1915](http://www.youtube.com/user/OHA1915)